



Offers In The Region Of £800,000

2 Bedroom Apartment for sale

10 Breezers Court, London





## Overview

This remarkable first-floor warehouse conversion offers a stunning blend of character features and contemporary finishes across nearly 1,100 sq ft of thoughtfully designed living space. From the moment you step into the generously sized entrance hallway, you'll be captivated by the impressive high ceilings and expansive layout.



## Key Features

- 1058 sqft Warehouse Conversion
- Share of Freehold
- Exposed Brickwork
- Close to St Kathrine Docks & the Tower of London
- Sought-After Location
- Separate Study
- Excellent Transport Links
- Secure Parking (Garage)
- Chain Free
- Close to Local Shops & Amenities









## Warehouse Elegance in a Prime London Setting...

Set within a beautifully restored warehouse conversion, this stunning two-bedroom, two-bathroom apartment perfectly balances historic character with modern luxury. Exposed brickwork, high ceilings, and expansive windows flood the space with natural light, creating an inviting and effortlessly stylish home.

### The Living Space...

The heart of the apartment is the spacious open-plan living area, where industrial charm meets contemporary refinement. Large warehouse-style windows illuminate the space, highlighting the original exposed brick walls and creating a warm, characterful ambiance. Whether you're hosting a dinner party or unwinding after a long day, this thoughtfully designed space is the ideal backdrop for any occasion.

The modern kitchen blends seamlessly into the living area, featuring sleek cabinets, high-spec integrated appliances, and ample workspace. A well-proportioned dining area makes entertaining effortless, while the generous layout ensures plenty of room to relax.

You also benefit from a versatile small room, which could be used as a home office, study, or gaming room - adapting to your lifestyle needs.

### The Bedrooms & Bathrooms...

The primary bedroom suite is a true retreat, offering excellent proportions, fitted storage, and a luxurious en-suite bathroom. High-end finishes, stylish tiling, and contemporary fixtures create a spa-like experience, perfect for starting or ending the day in comfort.

The second bedroom is equally well-appointed, boasting generous space and a bright, airy feel. A second full bathroom, designed with elegant modern fittings, completes the accommodation, ensuring both style and practicality.

### The Location...

This home is more than just a place to live—it's a lifestyle choice. Positioned moments from the iconic St. Katharine Docks, residents can enjoy a vibrant waterside community filled with boutique shops, fine dining restaurants, and charming cafés. From weekend brunches overlooking the marina to scenic



evening strolls along the Thames, this is London living at its finest.

For those who appreciate history, Wapping's cobbled streets, historic riverside pubs, and atmospheric wharves create a unique village-like feel, offering a rare balance between city life and tranquil retreat.

#### Connectivity & Convenience...

Wapping & Tower Hill stations are within easy reach, ensuring swift access to the City, Canary Wharf, and beyond.

Living here, you benefit from being close to a fantastic selection of local amenities, including artisan markets, boutique fitness studios, and riverside green spaces.

Secure, well-maintained development offering both peace of mind and exclusivity.

#### Final Words...

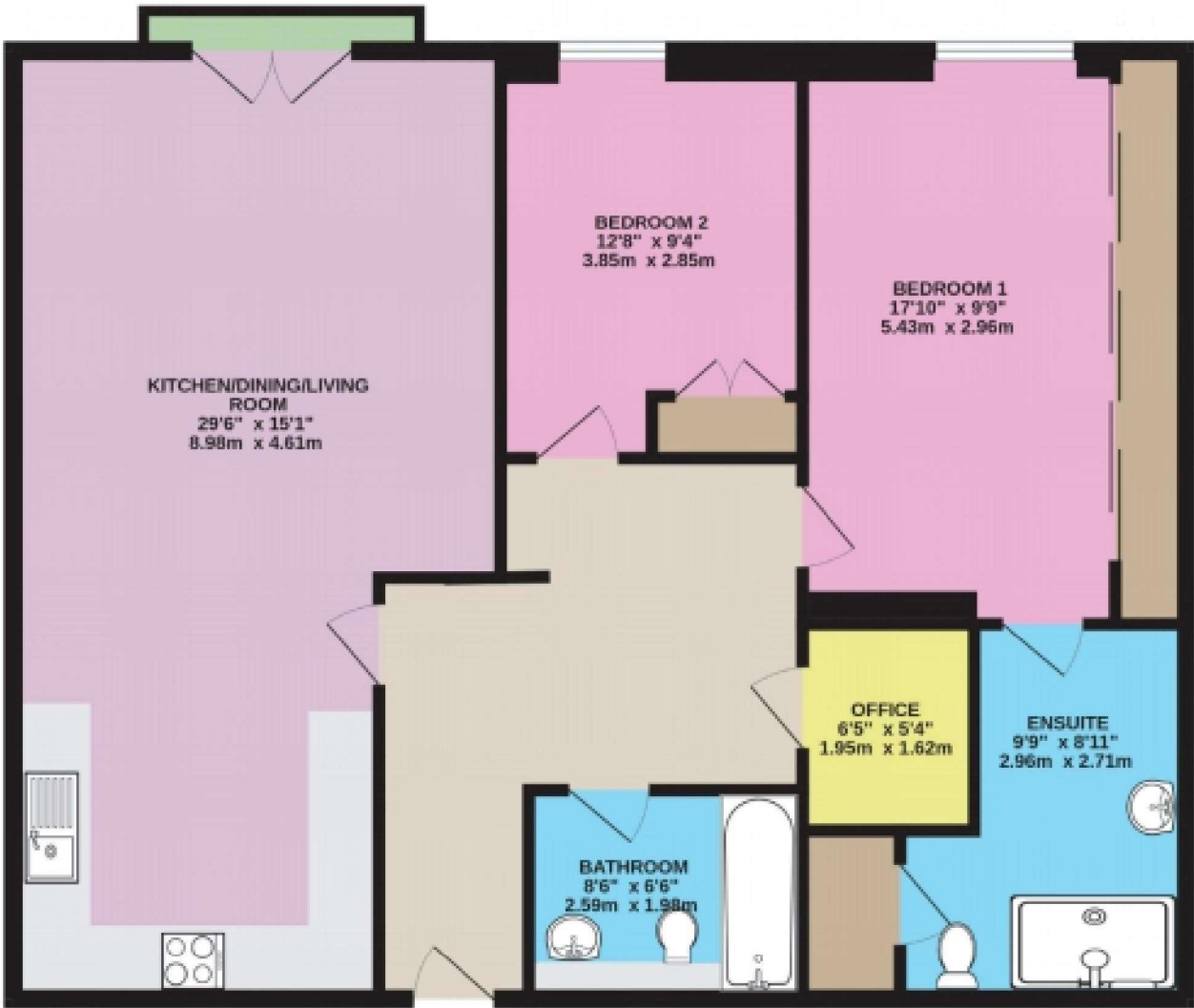
This exceptional warehouse apartment offers the perfect fusion of character, style, and location. Whether you're drawn to the timeless charm of exposed brick and high ceilings or the convenience of a vibrant, well-connected neighborhood, this home is an opportunity not to be missed.

A property of this caliber will not stay on the market for long. Be among the first to step inside—book your viewing today!



Breezers Court, The Highway, London, E1W

APPROX. GROSS INTERNAL FLOOR AREA 1058 SQ FT 98.2 SQ METRES



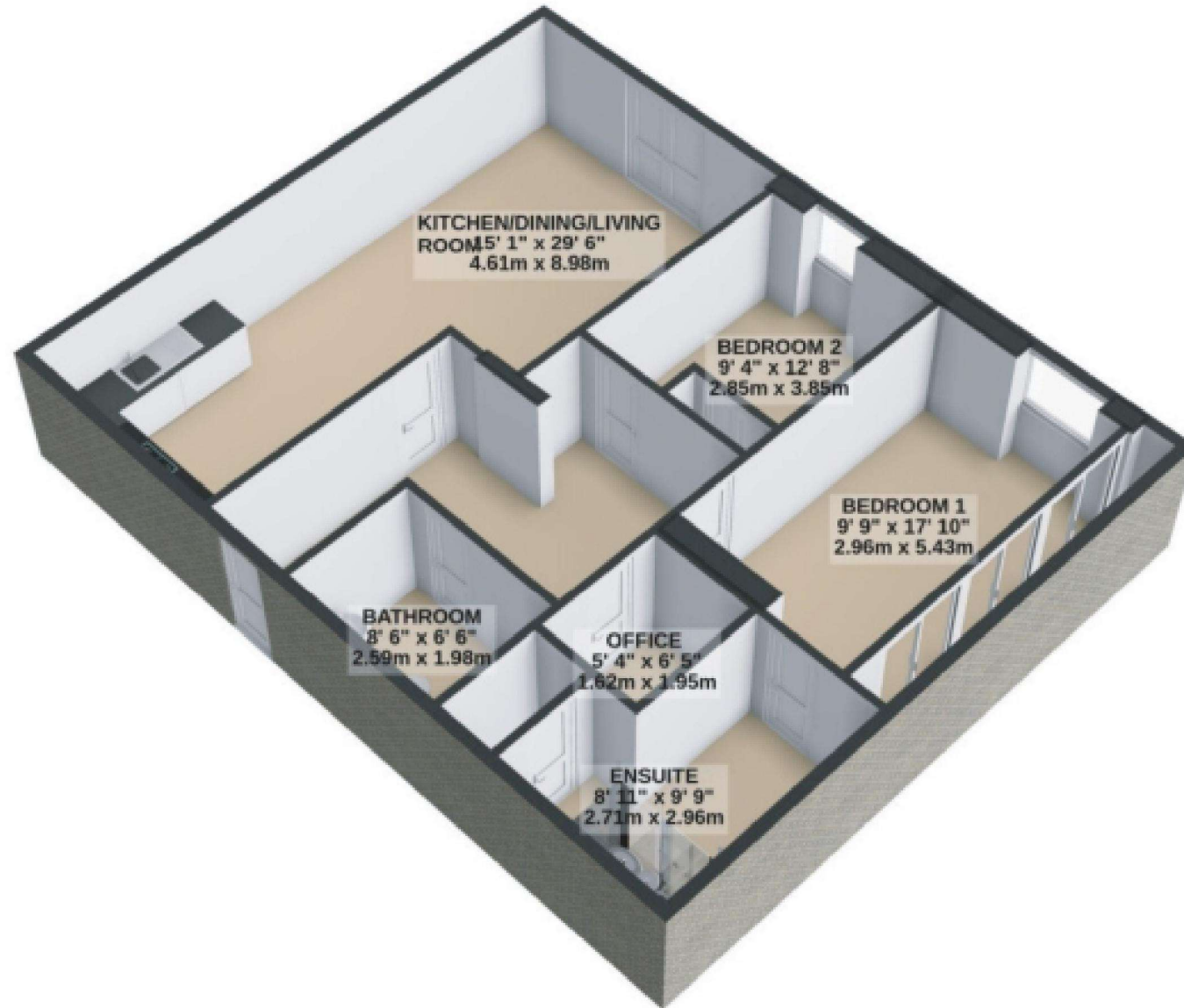
FIRST FLOOR

# Floorplans

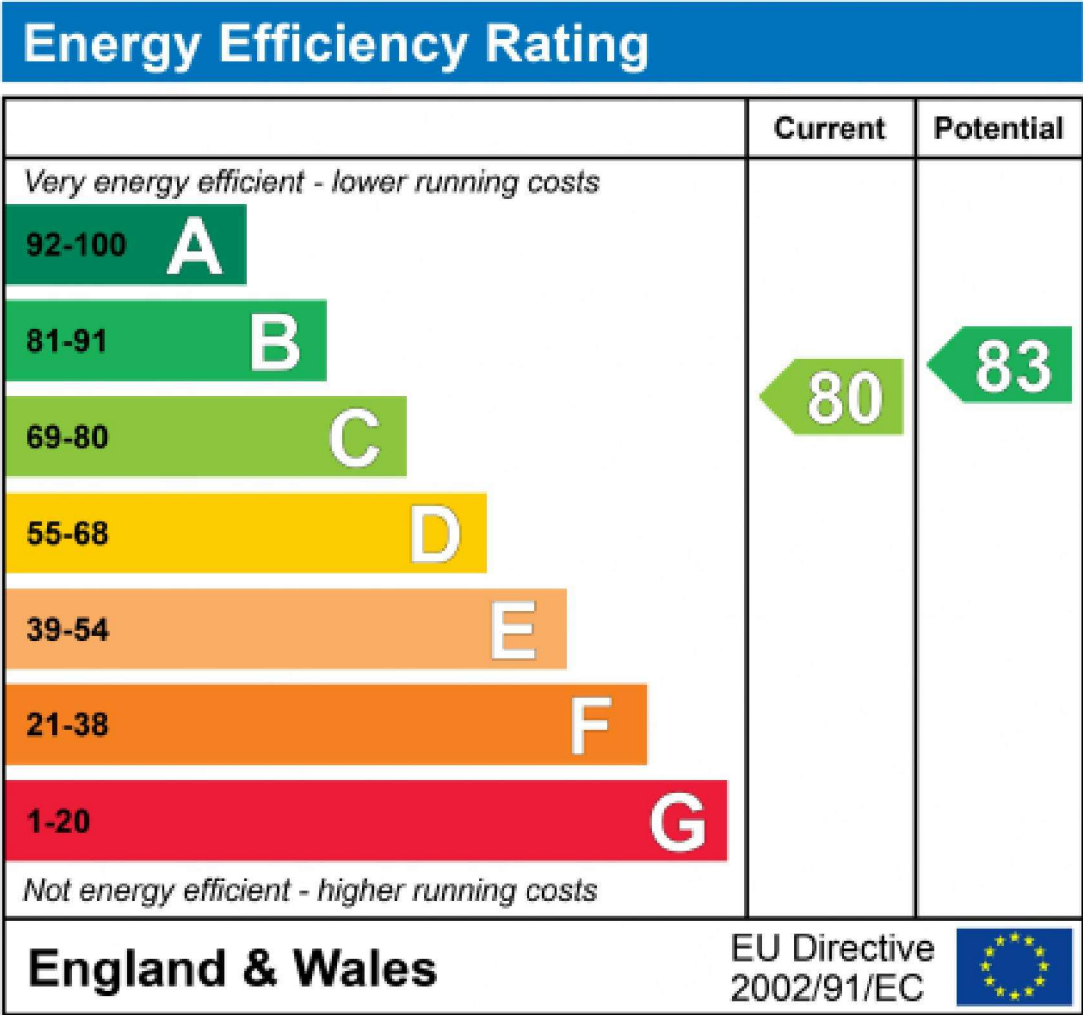


## Breezers Court, The Highway, London, E1W

APPROX. GROSS INTERNAL FLOOR AREA 1058 SQ FT 98.2 SQ METRES



FIRST FLOOR







Marketed by EweMove Wapping & Bow  
0203 866 7070 (24/7)  
[wapping@ewemove.com](mailto:wapping@ewemove.com)